

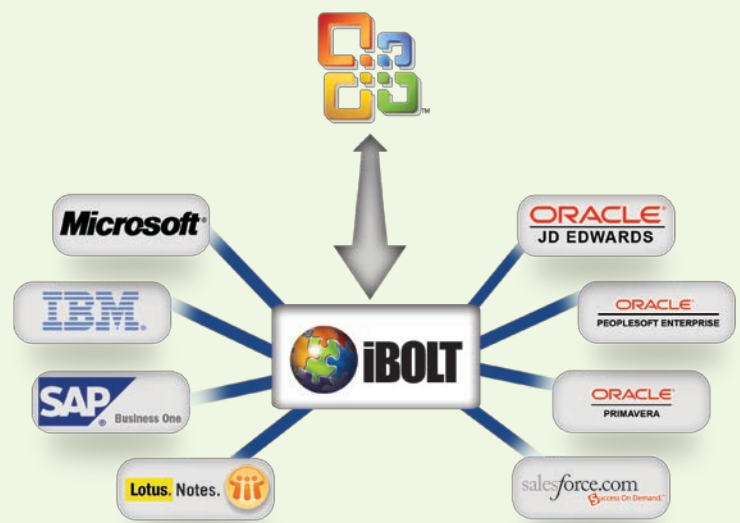
Extend and Enhance JD Edwards Business Processes with iBOLT and SharePoint

Engage Enterprise Data and Processes from within any SharePoint Application



The phenomenal success of SharePoint has generated market demand for a simple approach to business process orchestration with back-end software systems, including legacy applications. iBOLT Integration platform for SharePoint and JD Edwards uses a “drag, drop and configure” approach to business process integration that allows Oracle customers to utilize SharePoint to manage the overall user experience and iBOLT to orchestrate the back-end integration, regardless of platform or database.

iBOLT dramatically reduces the amount of time necessary to design new business process flows and provides a robust and scalable solution for integration. This is achieved through Magic Software’s smart metadata-driven approach. This approach helps to future-proof integration projects so that when underlying technologies and systems change, adaptation efforts are kept to a minimum.



iBOLT integrates any SharePoint application to JD Edwards, including:

- **Workforce management and HRIS**
 - Expense reporting
 - Time and Attendance
 - Sales Commission and Compensation management
 - Employee benefits
 - Employee purchases / Company Store
- **Asset Management**
 - Asset maintenance
 - Asset tracking
 - Asset inventory
- **eCommerce**
 - Catalogs
 - Price Lists
- **Project Management**
 - Project Scheduling
 - Change Orders
- **Custom business processes**

The iBOLT Business Integration platform provides all the functionality needed to automate business process integration with backend systems and websites including:

- ERP and CRM adapters
- Lotus Notes and Domino integration
- Data Mapping and Transformation
- Backend Communication and File protocols
- More than 150 optimized adapters, wizards and methods included

The iBOLT Business Integration platform includes a full design studio with topology, business process and integration flow editors that allow you to drag, drop and configure your business processes. iBOLT's fully scalable and secure server environment ensures transactional integrity and operational reliability. The visually intuitive monitor adds dashboard and log views of every process executed by the monitor. And of course you get enterprise-class debugging, error recovery and exceptions management capabilities.

Two-way real-time event-driven integration with:

- Microsoft Windows SharePoint Services
- Business Data Catalogs
- Entities
- Sites
- Lists
- Content Types
- Documents
- Forms

Requires MOSS 2007 or SharePoint 2010.

Integrate with your version of JD Edwards including JD Edwards World, JD Edwards XE, JD Edwards OneWorld and JD Edwards EnterpriseOne. With iBOLT you can work with JD Edwards business functions, services and z-processes.



Engage Enterprise Data and Processes from within any SharePoint Application

The iBOLT for SharePoint and JD Edwards bundle includes the following items:

- **The iBOLT Integration Platform.** The platform includes the iBOLT Studio, Monitor and a Server.
- **EnterpriseOne or JD Edwards World Adapter.** Customer may choose to include either an Enterprise One or a JD Edwards World adapter.
- **iSeries Adapter.** Allows SharePoint customers on IBM i platforms to fully access native platform capabilities.
- **SharePoint Adapter.** Provides bi-directional business process capabilities with SharePoint 2010 or SharePoint Server 2007.

Automate Microsoft SharePoint Integration with JD Edwards, PeopleSoft and more...

iBOLT for Microsoft SharePoint is a fast and powerful integration tool providing automatic synchronization between Microsoft SharePoint, JD Edwards (and other enterprise systems), Web Services, and Social Media. iBOLT extends the capabilities and usage of Oracle's JD Edwards EnterpriseOne and JD Edwards World ERP systems, integrating them with your company's entire range of business processes.

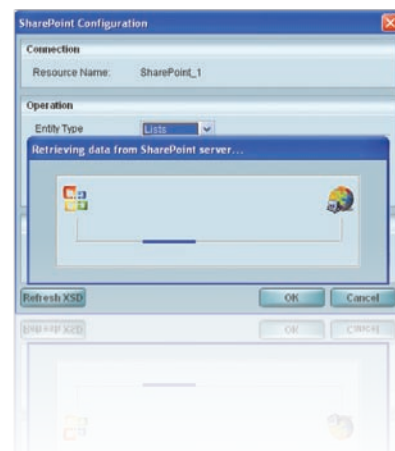
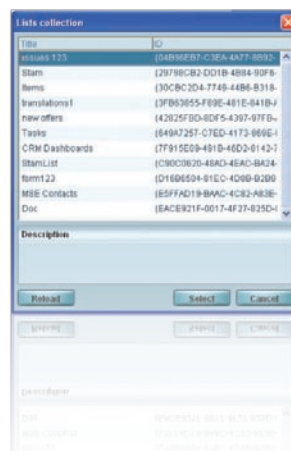
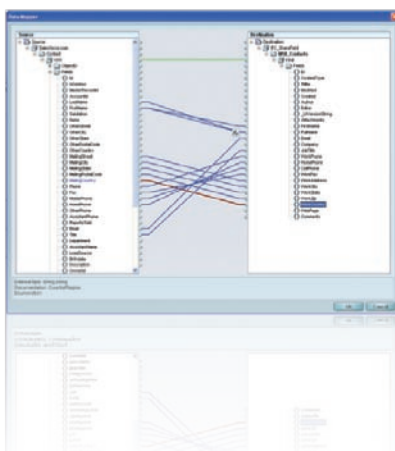
With more than 150 iBOLT adapters, wizards, services, and methods at your fingertips, iBOLT allows you to create continuous business processes based on JD Edwards and SharePoint. The solution utilizes Magic Software's proven business integration framework to allow business analysts and JD Edwards administrators to manage business processes using code-free visually oriented process design tools.

Rapidly Create Information Sharing and Business Workflow

iBOLT is a code-free business integration platform that provides all the functionality needed to automate business process integration between Microsoft SharePoint and back-end systems and websites.

iBOLT works behind the scenes, constantly and systematically transforming data, routing messages and orchestrating business processes in real-time between Microsoft SharePoint and other applications.

iBOLT is code-free, providing ready-made wizards and easy to use drag-and-drop components that allow users to quickly and cost-effectively extract the maximum value from their SharePoint application.





About Magic Software

Magic Software Enterprises Ltd. (NASDAQ: MGIC) is a global provider of mobile, cloud and on-premise application platform solutions, and business and process integration solutions. Magic Software has 14 offices worldwide and a presence in more than 50 countries, with a global network of ISVs, system integrators, value-added distributors and resellers, as well as consulting and OEM partners. The company's award-winning code-free solutions give partners and customers the power to leverage existing IT resources, enhance business agility and focus on core business priorities. Magic Software's technological approach, product roadmap and corporate strategy are recognized by leading industry analysts. Magic Software has partnerships with global IT leaders including SAP AG, Salesforce.com, IBM and Oracle. For more information, visit www.magicsoftware.com.

www.magicsoftware.com

Magic Software's Worldwide Offices

Corporate Headquarters

Magic Software Enterprises Ltd.
Tel: +972 3 538 9292

UK

Magic Software Enterprises UK
Tel: +44 1344 667 000

France

Magic Software Enterprises France
Tel: +33 1 49 10 58 58

Distribution

Magic Software Enterprises
Tel: +972 3 538 9480

North and Latin America

Magic Software Enterprises Inc.
Tel: +1 949 250 1718
info@magicsoftware.com

Germany

Magic Software Enterprises Germany
Tel: +49 89 962 730

Hungary

Magic Software Enterprises (Onyx) Hungary Ltd.
Tel: +36 1 216 9910

South Africa

Magix Integration
Tel: +27 11 258 4442

Japan

Magic Software Japan K.K.
Tel: +81 3 5365 1600

Benelux

Magic Software Enterprises Netherlands
Tel: +31 30 65 66 266

Israel

Magic Software Enterprises Israel
Tel: +972 3 538 9389

India

Magic Software Enterprises India Pvt. Ltd.
Tel: +91 9886 455 398